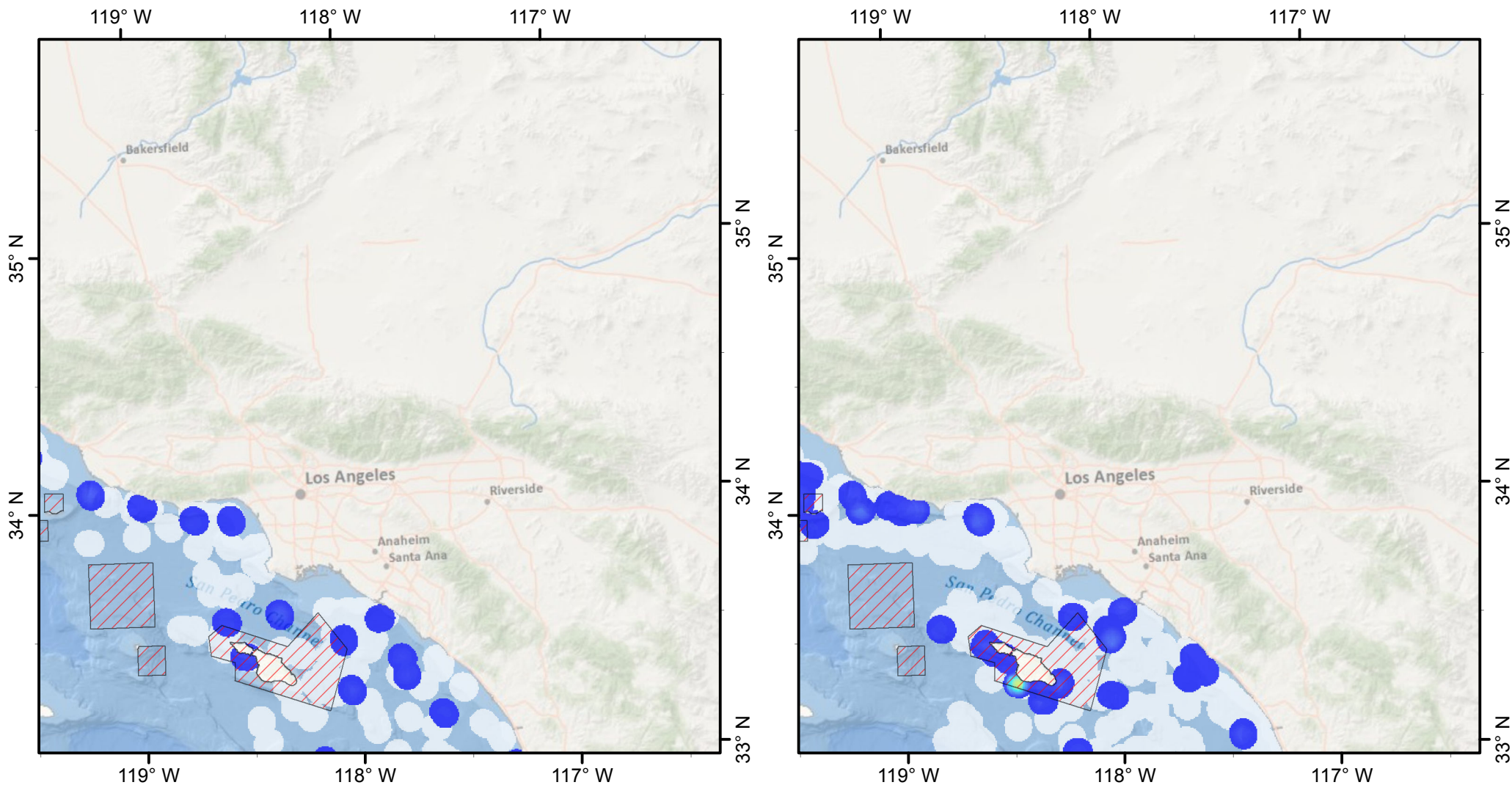


Before Standardized Sea Pen/Sea Whip Catch (WCGBTs) After



F4

0 20 40 60 80 100

Kilometers

0 20 40 60 80

Nautical Miles

Map Scale: 1:2,400,000

Date Saved: 20 Aug 2012

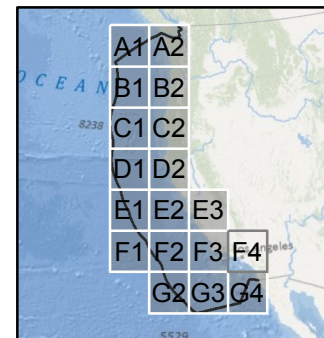
Author: Curt Whitmire (NOAA Fisheries - NWFSC)

CPUE (kg/km)

High : 0.001969

Low : 0.000008

EFH Cons. Area



Map 8 of 10

Search Radius: 6,000 m
Cell Size: 500 m